



Environmental Protection Information Center

Annual Report 2011



Keeping Northwest California Wild Since 1977

Main Office

145 G Street, Suite A
Arcata, CA 95521
Phone 707.822.7711
Fax 707.822.7712



EPIC Staff

Executive Director: Gary Graham Hughes
Conservation Director: Andrew Orahoske
Administrative Director: Dian Griffith
Development Director: Natalynne DeLapp
Public Lands Advocate: Kimberly Baker
Online Organizer and Office Manager: Amber Jamieson
Staff Attorney: Sharon E. Duggan

EPIC Contractors

Industrial Forestry Reform Advocate: Rob DiPerna
Forest and Watershed Advocate: Richard Gienger
Graphic Design & Community Outreach: Kelly Karaba, Volunteer of the Year

EPIC Board of Directors

Heather Reese, *President*
Noah Levy, *Vice President*
Shawnee Alexandri, *Treasurer*
Josh Brown, *Secretary*
Dian Griffith
Lindsey Holm
Joan Merriman
Hezekiah Allen

What's Inside

Letter from the Executive Director.....	3
EPIC Gets Results!.....	4 & 5
Map: Where EPIC Works	6
Financial Statement & Acknowledgements.....	7



Photo from EPIC Spring Gala 2012: Natalynne DeLapp, Kelly Karaba, Gary Graham Hughes, Kimberly Baker, Rob DiPerna, Dian Griffith, Amber Jamieson, and Andrew Orahoske

Cover Photo, "Fall Chinook," by
Thomas B. Dunklin
thomasbdunklin.com
Design and Layout by Kelly Karaba & TREES



Mission Statement

The Environmental Protection Information Center works to protect and restore ancient forests, watersheds, coastal estuaries, and native species in Northern California. EPIC uses an integrated, science-based approach, combining public education, citizen advocacy, and strategic litigation.

Esteemed fellow defenders of Wild California,

It is with great appreciation and satisfaction that we share with our extended family of supporters the 2011 EPIC Annual Report. This past year has been an amazing year in the history of EPIC! We have come through a major staffing transition with increased momentum that has resulted in a series of concrete advances for defending our Wild California.

2011 was very significant for EPIC in that we have confirmed the existence of an exuberant, dedicated, and growing membership and donor base that is willing to invest in innovative legal advocacy for the Northwest California environment. Since the founding of the organization 35 years ago, EPIC has been a power packed organization with broad community support that gets results disproportionate to our size and resources.

In fact, EPIC's track record for being a grassroots group that gets big results with world-class partners was confirmed in the recent legal victory over the California Department of Transportation, further blocking their proposal for unnecessary highway development in the globally recognized Richardson Grove State Park. This is an unforgettable event in the rich history of EPIC's advocacy for lasting protections for the few truly ancient coastal redwood forest groves that remain under our current stewardship. Caring for these forests is seen at EPIC as a natural obligation that we have to future generations.

Though it is exciting to contemplate the past year's victories, it is also sobering to recognize that even these significant advances can seemingly become nothing more than a temporary reprieve before the unending onslaught of environmental challenges rising in front of us. To do nothing, however, is not an option. EPIC asks that you join us in this humongous task of protecting a landscape ark that can provide our communities some sense of security as the threat of local and global environmental degradation begins to take a toll on our daily lives.

We ask you to stay with EPIC because science and law-based conservation advocacy on the North Coast of California is EPIC's specialty. In the 35 years since the organization was formed, EPIC has learned to celebrate the web of life through the innovative use of environmental law that forces changes in the behavior of the companies and agencies whose activities and decisions are pushing irreplaceable elements of the miracle of creation to the very brink of extinction.

That is why we are sharing this 2011 EPIC Annual Report with you, to highlight the last year's accomplishments, and to look ahead to the cutting-edge environmental advocacy initiatives that we will be bringing to fruition in the coming year, and beyond.

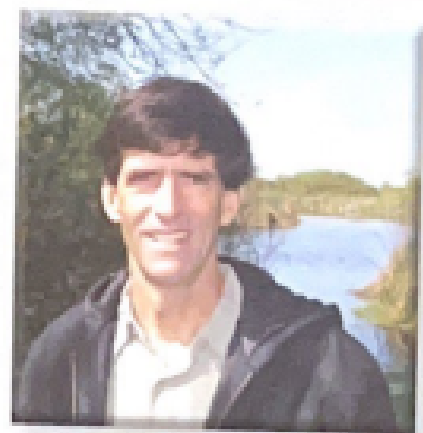
The successes of the coming year will be due exclusively to the support of our members and donors, as they were last year and every year that EPIC has been in existence, and it is important that we thank you now for bringing life to our effectiveness in the coming year. Our organization is dependent on the generosity and dedication of the growing network of people who know that EPIC is a high return investment in protecting your Wild California. Please enjoy this annual report, and recognize the accomplishments that your donations, volunteer contributions, and moral support have made possible. It is a great honor to know that our contributors are willing to keep EPIC on their priority list of causes worthy of their hard earned savings. Thank you for providing our team that encouragement as we work on these sometimes heartbreaking and daunting tasks.

At the heart of it, supporting EPIC is giving a gift of environmental health to the future generations. EPIC will continue to be here for you, and we thank you deeply for celebrating our 35th birthday with your donation of time, energy, and financial resources. Thank you for being with us as your guardians of our Wild California.

For the wild,



Gary



Endangered Species and Biodiversity Defense

Our program to defend endangered species and the web of life permeates all of EPIC's other core program work on Public Lands, Industrial Forestry Reform, and for Clean Water and Healthy Rivers. We leverage protections available in existing laws to obtain changes in management by corporations and state agencies that will result in more resilient ecosystems and the recovery of sensitive and at-risk species.

What we have done:

- *Petitioned to protect the Humboldt Marten under the Federal Endangered Species Act (ESA), successfully securing a positive finding and the subsequent status review for this tiny charismatic carnivore.
- *Intervened on behalf of the Marbled Murrelet to preserve existing protections for this iconic ancient forest species against an assault mounted by the timber industry.
- *Monitored and commented on Northern Spotted Owl and Coho Salmon Recovery Plans released in the past year.
- *Pursued and were denied endangered species protections for Upper Klamath and Trinity River Spring Chinook, unmasking the willingness of government agencies to allow specific salmon runs to go extinct.

What we are doing:

- *Petitioning for "uplisting" from threatened to endangered status under Federal ESA for Northern Spotted Owl, Marbled Murrelet, and Coho Salmon to increase protections for these critical old-growth dependent species.
- *Petitioning for listing of the Northern Spotted Owl under the California Endangered Species Act.
- *Petition for listing of Gray Wolf under the California Endangered Species Act as one element of a broad strategy to welcome this crucial predator back to Northern California.
- *Preparing with partners for litigation in case the United States Fish and Wildlife Service fails to act in a timely manner in arriving at a decision that will provide endangered species protections for the Humboldt Marten.

Strategic Litigation

Through the decades, EPIC has identified legal action as being a no-nonsense means of forcing abusive corporations and reticent land management agencies to be held accountable for practices or decisions that are damaging to native ecosystems and the species that depend on them. EPIC gets results in the courtroom, and we will continue to develop hard-bitting and precedent setting legal actions that bring voice to those that have no voice.

What we have won:

- *Prevailed in the summer of 2011 with the Karuk Tribe and other partners in a lawsuit against the Six Rivers National Forest for violation of the National Historic Preservation Act during implementation of the Orleans Community Fuels Reduction project in 2009.
- *Effectively sent the California Department of Transportation back to the drawing board when we prevailed with partners in federal court against Caltrans' highway development project in Richardson Grove State Park.
- *Won in a lawsuit challenging Categorical Exclusions for grazing permits on the Mendocino and Klamath National Forests, resulting in new protections from cattle grazing for sensitive habitats in the high country of the Marble Mountain Wilderness.

What we will win:

- *Legal challenge against the 5,000+ acre Beaverslide commercial timber sale on the Six Rivers National Forest for inadequate assessment of impacts on Northern Spotted Owl and other endangered species like the Pacific Fisher and the Northern Goshawk.
- *Suing the Klamath National Forest over their Motorized Travel Management Plan, which intends to add more than 50 miles of motorized trails and roads to an already extensive and difficult to maintain motorized road system.
- *EPIC is developing a robust and technically savvy citizen suit under the Federal Endangered Species Act against Sierra Pacific Industries for illegal take of the Northern Spotted Owl, with the goal of obtaining substantial changes in the abusive practices of this archaic timber giant.

Outreach, Media, and Community Building

Our small organization has a dedicated and active core community that is eager and motivated to take action on the issues that we identify as being important to the well being of the natural and human inhabitants of our bioregion. Building our constituency is an integral part of our day to day organizing, and EPIC continues to identify contemporary strategies to fortify our membership and activist base.

What we have done:

*Ongoing updates to our website, successfully publishing new material and distributing our electronic newsletter on a bi-weekly basis in order to stay in close contact with our community of supporters.

*Amplified the presence of EPIC in social networking media, increasing our capacity for rapid response on hot button issues, and boosting the organization's ability to connect with and engage with our donors, fans, and activist base.

*Produced a number of spectacular events that merged the creative consciousness of the artistic community in our bioregion with the art of science and law based conservation advocacy.

*Obtained coverage in newspapers, radio broadcasts, and other media outlets across Northern California, consistently putting EPIC in the public eye as Northwest California's premier independent environmental watchdog.

What we are doing:

*Actively participating in community events, music concerts, and arts festivals to build the presence of EPIC throughout the region, and to be an accessible part of the culturally innovative North Coast village to which we belong.

*Developing new tools for creating independent media that assists the organization in conveying to our intimate community of supporters, as well as the general public, what it is that EPIC is doing, and why we believe this work is important.

*Concentrating resources and talent in the building of the EPIC membership constituency as it is the grassroots strength of our membership standing behind our policy positions that gives EPIC political weight and authenticity.

Preserving Access to Environmental Democracy

The work that EPIC does for the natural environment in Northwest California exposes the social and economic inequalities that plague our bioregion. When we challenge land management agencies and the destructive activities of rapacious corporations, we are challenging the inequalities in our society that provide the wealthy with an unfair advantage in their pursuit of profits at the expense of the well being of the natural and human communities that call Northwest California home.

What we have done:

*Fought back successfully against the undemocratic process that Caltrans has pushed in their efforts to bully the North Coast community into accepting their ill-advised highway development projects.

*Exposed the backroom dealings in Sacramento that favor giant corporations like Sierra Pacific Industries with relief from their liabilities and debts.

*Successfully forced land management agencies to provide adequate public participation on innumerable natural resource management actions on both public and private land.

What we are doing:

*Providing a vehicle for demanding corporate accountability by developing and prosecuting a landmark case against Sierra Pacific Industries for their destruction of endangered species habitat and their unwillingness to abide by our nation's bedrock environmental laws.

*Continuing to watchdog state agencies like Caltrans to insure that they operate within the letter of the law and respect rare and precious resources like the Smith River and our ancient redwood state parks.

*Treasuring EPIC's grassroots heritage by building an increasingly active and dedicated membership base that celebrates the values inherent in working in the public interest to protect the priceless nature birthed in the temperate redwood rainforest and the interior mountains and river valleys of the Klamath Region.

EPIC: Guardian of Your Wild Backyard!

Welcome to the wildest corner of California! Our diverse bioregion is composed of ancient redwood groves, steep forested valleys, snow clad granite spires, and the highest concentration of wild and scenic rivers in the state. It is home to priceless salmon runs, Northern Spotted Owls, Marbled Murrelets, and many other species. Thirty-five years ago, EPIC was founded in southern Humboldt County, and our work now extends throughout northwestern California. From our first legal battle to save Sally Bell Grove and establish the Sinkyone Wilderness in northern Mendocino County to current efforts to protect Tolowa Dunes State Park in Del Norte County, to defending Richardson Grove State Park, to fighting for the remaining old growth forests on private and public land across five counties, we cover a wild region with an abundance of globally important biodiversity.

Coho Salmon are on the brink of extinction in a majority of their range. In California's Central and North Coast, the status of Coho is particularly dire, with loss of freshwater spawning and rearing habitat being the main threat to their survival. EPIC is working to restrain timber companies that continue to push the Coho past the tipping point, as well as engage residents and agricultural producers to conserve the resource most needed by endangered Coho Salmon – clean, cold and abundant water.



EPIC partnered with the Center for Biological Diversity in petitioning to list a very rare forest carnivore, the Humboldt Marten, under the federal Endangered Species Act. The petition is now undergoing a full status review and we expect to see the marten gain protections before the end of 2012. Bringing this rare and charismatic forest denizen one step closer to full legal protection is complimented by EPIC advocacy for immediate reform in industrial forestry practices, and by promoting restoration of native forests in our region.



- Private Industrial Timberland
- National Forest
- State and National Parks

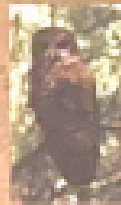


EPIC was instrumental in ending illegal grazing permits in Tolowa Dunes State Park, and has engaged at a high level with park administrators to reduce and eliminate destructive off-road vehicle abuses in the park. EPIC closely monitors the California Department of Transportation's proposal to widen and further develop Highway 197/199 along the pristine Smith River, and is uniquely positioned to defend the rare and endangered species in Del Norte County.

For the first time in nearly 90 years, a wild wolf has been roaming the roadless areas and wilderness of Northern California. At EPIC, we intend to advocate for wolves as strongly as we advocate for all native biodiversity in our region.



In the next year this means pursuing protections for the Gray Wolf under the California Endangered Species Act, as well as expanding upon our grazing reform work on public lands.



The Northern Spotted Owl is a well-recognized actor on the stage of forest conservation. Despite being designated as "threatened" under the federal Endangered Species Act in 1990, studies continue to document population declines due to habitat loss. EPIC will work to protect the spotted owl on private and public lands with strategic litigation designed to secure longstanding protections for critical habitat. EPIC is spearheading petitions to increase federal protection as well as list the species under the California Endangered Species Act.

EPIC has gone to great lengths to defend Richardson Grove State Park from inappropriate highway development. After a long battle, EPIC secured a legal victory over the California Department of Transportation, sending the agency back to the drawing board on its proposal to widen Highway 101 in the midst of the ancient grove. This was a tremendous win in an ongoing battle for the future of our redwood parks. EPIC will continue to work to protect Richardson Grove and all state parks from misguided management. EPIC is committed to reversing the imminent closure, dismantling, and abandonment of our state parks, one of the most spectacular and diverse protected area systems on Earth.



ENVIRONMENTAL PROTECTION INFORMATION CENTER

Annual Report

Fiscal Year January 1, 2011 to December 31, 2011

STATEMENT OF ACTIVITIES

REVENUE & SUPPORT

Membership & Donations	\$ 134,285.88
Foundation Grants	\$ 75,000.00
Fundraising Events	\$ 22,660.55
In-Kind Donations	\$ 50.00
Interest Income	\$ 668.37
Legal Fees & Awards	\$ 21,848.93
TOTAL SUPPORT	\$ 254,511.71

EXPENSES

General & Admin.	\$ 38,089.74
Fundraising	\$ 46,138.62
Industrial Forestry Reform	\$ 92,737.58
Public Lands Program	\$ 69,423.48
Biodiversity Projects	\$ 14,223.66
Clean Water Program	\$ 17,397.24
Outreach & Development	\$ 44,345.88
TOTAL EXPENSES	\$ 322,334.26

Increase (decrease) in Net Assets	\$ (67,822.55)
CHANGES IN NET ASSETS	\$ (67,822.55)
NET ASSETS @ Beginning of Year	\$ 144,411.63
NET ASSETS @ End of Year	\$ 76,589.08

STATEMENT OF FINANCIAL POSITION

ASSETS

CURRENT ASSETS

Checking/Savings	\$ 101,161.43
Accounts Receivable	\$ 29,853.25
Other Current Assets	\$ 5,890.00
TOTAL CURRENT ASSETS	\$ 136,904.68

FIXED ASSETS	\$ 5,209.58
TOTAL ASSETS	\$ 142,114.26

LIABILITIES & NET ASSETS

LIABILITIES

Accounts Payable	\$ 1,037.43
Credit Cards	\$ 109.90
Other Current Liabilities	\$ 4,377.85
Long Term Liabilities	\$ 60,000.00
TOTAL LIABILITIES	\$ 65,525.18

NET ASSETS

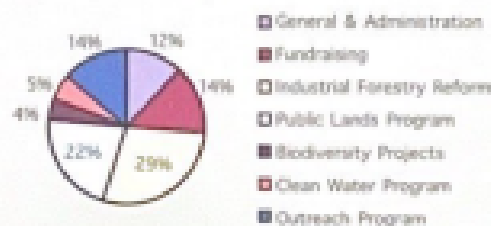
Unrestricted Net Assets	\$ 92,509.82
Temp. Restricted Net Assets	\$ 36,151.81
Restricted Net Assets	\$ 15,750.00
Net Income	\$ (67,822.55)
TOTAL NET ASSETS	\$ 76,589.08

TOTAL LIABILITIES and NET ASSETS	\$ 142,114.26
---	----------------------

Support



Expenses



A Special Thank you To Cecelia Lanman:

The staff and Board of Directors of EPIC would like to say thank you to Cecelia Lanman for her service to the organization. Cecelia has been a driving force for EPIC over the course of several decades, providing leadership as the Program Director, as well as serving numerous terms as a member of the Board of Directors. Her last term on the board came to a close at the end of 2011, and we extend to Cecelia a special farewell. We appreciate her dedication to EPIC, and we are comforted in knowing that Cecelia will continue to provide guidance to the current staff at EPIC. The value of her insight and perspective will be treasured by the team that continues in her footsteps advocating for the protection of the North Coast of California.



Thank You

We would like to express our heartfelt thanks and deepest gratitude to all of our supporters, from the largest foundation to each and every individual member, business supporter and volunteer. Thank you for working with us in 2011, and for making us strong and resilient for the work ahead.

Contributing Foundations

We applaud your decision to support our work:

Environment Now, Firefall Foundation, Fund for Wild Nature, Google.org, Guacamole Fund, Norcross Wildlife Fund, Patagonia Environmental Grants Program, Wooden Foundation, William C. Bannerman Foundation & Tides Foundation

EPIC's Partners

EPIC works with a number of awesome groups, and we want to thank them all. We particularly note:

Advocates for the West, Californians for Alternatives to Toxics, California Native Plant Society, California Wilderness Coalition, California Water Impact Network, Center for Biological Diversity, Citizens for Better Forestry, Conservation Congress, Defenders of Wildlife, Earthjustice, Forests Forever, Friends of Del Norte, Friends of the Eel River, Friends of the River, Humboldt Baykeeper, Karuk Tribe, KHSU, Klamath Forest Alliance, Klamath Riverkeeper, Klamath Siskiyou Wildlands Center, KMUD, Marpole Restoration Council, Northcoast Environmental Center, Northcoast Stream Flow Coalition, Oregon Wild, Pacific Coast Federation of Fisherman's Associations, Pacific Forest Trust, Redwood Region Audubon Society, Salmon Forever, Sierra Club, Smith River Alliance, Tolowa Dunes Stewards, Trees Foundation, Western Environmental Law Center, Wilderness Society, Wilderness Watch, Wildlands CPR, and Willits Environmental Center.

Legacy Gifts



Fred Hummel - guardian angel of Wild California

EPIC is forever grateful to supporter Fred Hummel for his commitment to the preservation of the unique landscapes of Northwest California. His legacy donation to EPIC will benefit our work immensely over the next several years. Planned giving is a meaningful way in which you can protect endangered species and imperiled ecosystems on the North Coast for future generations.





Environmental Protection Information Center, Inc.
PO Box 543
Redway, Ca 95560

Be part of the EPIC Community

Join us in helping to protect the wildest corner of Northwest California. Your contributions make our work possible. Whether you give every month or annually, your membership gift supports effective protection for forests, watersheds, and native species throughout the region.

Become a monthly sustainer

Protecting the wild is an ongoing challenge. Your year-round donations provide dependable funds to keep EPIC in the fight. Sign up online to give monthly and start keeping Northwest California wild today.

 Eco Printed on Recycled Paper



You're invited

EPIC's 35th Anniversary Celebration!

Friday November 2, 2012

Mateel Community Center, in Redway, California

Celebrate EPIC's 35th Anniversary as the leading advocates for environmental protection on the North Coast. Our annual party will feature a delicious dinner and the presentation of our Sempervirens Award for lifetime achievement, with lively musical performances, local artisan talents, and dancing until the late hours. Save the date and come join us for our 35th birthday party at the Mateel in Redway.

Sign up online at wildcalifornia.org